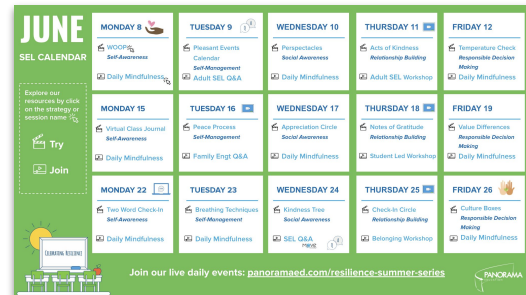




# SEL Calendar

## [June 2020]

*A curated selection of daily social-emotional learning activities and virtual learning opportunities for June 2020 to provide inspiration and strategies for promoting students' SEL this summer.*




# How to use this resource

- The **SEL Calendar [June 2020]** is designed to help educators continue to prioritize students' social-emotional learning this summer.
- The calendar includes **an SEL activity for each day of the month** along with **free virtual learning opportunities for educators** on topics such as family engagement, adult SEL, mindfulness and cultivating a sense of belonging.
- Use this calendar to **take concrete steps this summer** to support students' SEL for the future.

# JUNE

## SEL CALENDAR

Explore our resources by click on the strategy or session name 



Try



Join

**MONDAY 8**



**WOOP**

*Self-Awareness*



**Daily Mindfulness**

**TUESDAY 9**



**Pleasant Events Calendar**

*Self-Management*



**Adult SEL Q&A**

**WEDNESDAY 10**



**Perspectacles**

*Social Awareness*



**Daily Mindfulness**

**THURSDAY 11**



**Acts of Kindness**

*Relationship Building*



**Adult SEL Workshop**

**FRIDAY 12**



**Temperature Check**

*Responsible Decision Making*



**Daily Mindfulness**

**MONDAY 15**



**Virtual Class Journal**

*Self-Awareness*



**Daily Mindfulness**

**TUESDAY 16**



**Peace Process**

*Self-Management*



**Family Engt Q&A**

**WEDNESDAY 17**



**Appreciation Circle**

*Social Awareness*



**Daily Mindfulness**

**THURSDAY 18**



**Notes of Gratitude**

*Relationship Building*



**Student Led Workshop**

**FRIDAY 19**



**Value Differences**

*Responsible Decision Making*



**Daily Mindfulness**

**MONDAY 22**



**Two Word Check-In**

*Self-Awareness*



**Daily Mindfulness**

**TUESDAY 23**



**Breathing Techniques**

*Self-Management*



**Daily Mindfulness**

**WEDNESDAY 24**



**Kindness Tree**

*Social Awareness*



**SEL Q&A**



**THURSDAY 25**



**Check-In Circle**

*Relationship Building*



**Belonging Workshop**

**FRIDAY 26**

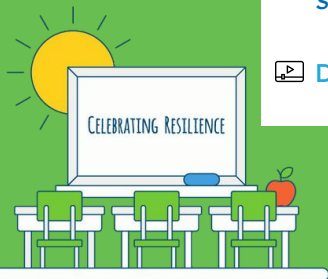


**Culture Boxes**

*Responsible Decision Making*



**Daily Mindfulness**



Join our live daily events: [panoramaed.com/resilience-summer-series](https://panoramaed.com/resilience-summer-series)



# About Panorama Education



[Panorama for Social-Emotional Learning](#) helps districts support each students' SEL—the critical skills and mindsets that enable success in school and in life—with a research-backed survey and actionable data reports. Panorama's leading analytics platform makes it easy for educators to explore results and access actionable strategies to build students' SEL skills.

Today, 900 school systems serving 10 million students trust Panorama, including the New York City Department of Education, Dallas Independent School District, and San Francisco Unified School District.

