



**PANORAMA**  
EDUCATION

## **MSIP 6 and Panorama Education Alignment**

Panorama Education proudly partners with 30+ Missouri districts to improve school climate and support student success. Learn how Panorama's survey and intervention platform aligns with MSIP 6 (Missouri School Improvement Program 6).



# Table of Contents

<b>Leadership (L)</b> .....	<b>3</b>
<b>Effective Teaching &amp; Learning (TL)</b> .....	<b>4</b>
<b>Collaborative Climate &amp; Culture (CC)</b> .....	<b>4</b>
<b>Data-Based Decision Making (DB)</b> .....	<b>5</b>
<b>Alignment of Standards, Curriculum, &amp; Assessments (AS)</b> .....	<b>6</b>
<b>Equity &amp; Access (EA)</b> .....	<b>7</b>
<b>About Panorama Education</b> .....	<b>8</b>

## MSIP-6 Standard

## Panorama Alignment

### Leadership (L)

“The local board adopts, monitors, and annually reviews the implementation and outcomes of the Continuous School Improvement Plan (CSIP) that focuses on district performance and improvement.”

“The school system provides for two-way, reliable, and representative communication with all stakeholders.”

- Customizable, research-backed [survey instruments](#) to gather feedback from students, staff, and families across climate, culture, and academic support
- [Reporting platform](#) to analyze survey results against national benchmarks and to share outcomes of the CSIP with district leaders and the board
- [School leadership team training](#) with Panorama’s Teaching and Learning facilitators to [embed survey results into CSIP planning](#) (Session offering: “Embedding Survey Results Into School Improvement Planning”)

## Sample Panorama Teaching & Learning Worksheets



### Action Planning with Panorama Data

Select a data point. Write in your own words what you think your students are telling you.	Based on what you are hearing, write out what the data might mean they are asking you to do.	What are 3-5 actions you could take to respond?
Ex. 37% of students in grades 6-12 responded favorably to the question “How connected do you feel to the adults at your school?” It sounds like our middle and high school students are telling us that they only feel somewhat connected to the adults in their buildings.	Ex. Students may be asking for adults to be more casual and have more of a relationship with them. They may want to know more about what they have in common with the adults in their school.	Ex. We could use <a href="#">Panorama’s Get to Know You Survey</a> to show students what they have in common with their teachers. We could also organize events like “cocoa with the counselor” or “pie with the principal” to allow students to get to know administrators better.

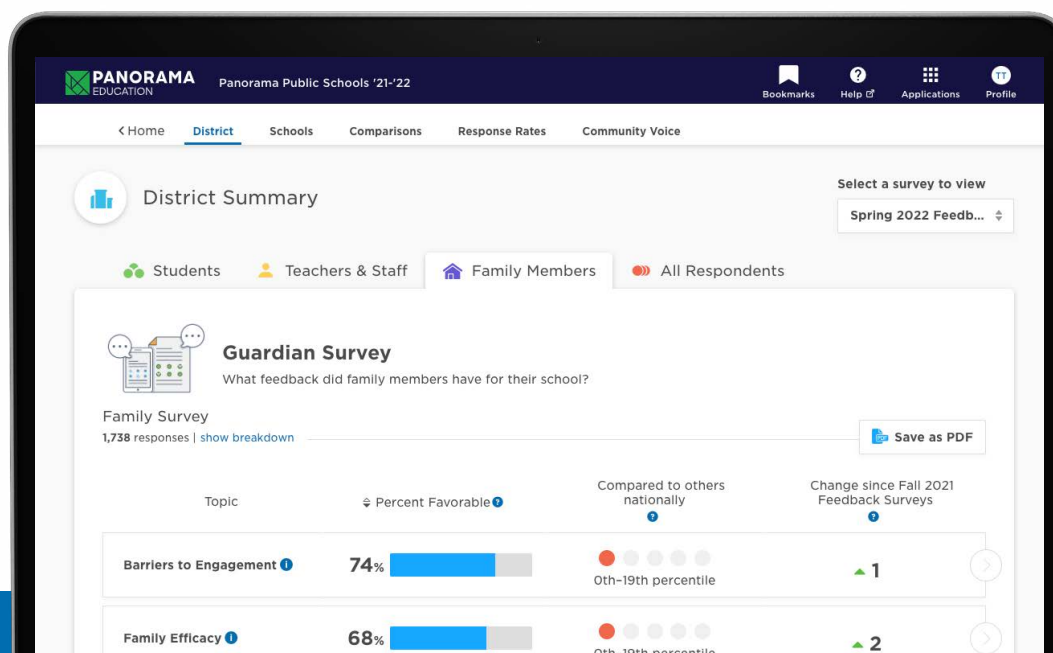


## Action Planning With Panorama Data

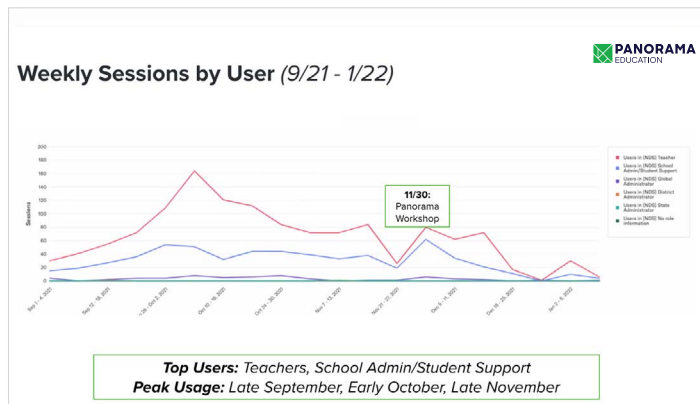
## School Improvement Protocol Worksheet

PANORAMA EDUCATION	
Action Protocol	
<b>Guidance</b> <b>Facts:</b> Describe the data. • Describe—do not interpret or judge. • Focus on observations of “Who,” “What,” “Where,” and “When.”	<b>Your Notes:</b> Select 1-2 data points to dive into using the protocol below
<b>Omissions:</b> What information is missing in this data? • Consider the lived experience behind this data. What additional context would be helpful to the team in interpreting and acting on this data? • What additional information would give us insight? • Whose voices and experiences are not represented? • What biases or blind spots might exist within our team as we interpret data?	
<b>Interpretations:</b> What does the data suggest? • Look for the bright spots and think about what may be contributing to success. • Consider root causes. • Connect the data to your personal observation and experience without blaming or naming individuals. • What might students be asking us to do?	
<b>Implications for Practice</b> • What are ways we can innovate to be more effective and equitable? • Does the data suggest that any of our	

MSIP-6 Standard	Panorama Alignment
<p><b>Effective Teaching &amp; Learning (TL)</b></p> <p>“The school system prepares students through the development of essential intrapersonal and interpersonal skills.”</p> <p>“The school system provides a comprehensive multi-tiered system of support that addresses the academic, emotional, behavioral, social, and physical needs of each student.”</p>	<ul style="list-style-type: none"> <li>• Research-backed <a href="#">social-emotional learning (SEL) measures</a> to understand and support student development of intrapersonal and interpersonal skills like Growth Mindset and Self-Management</li> <li>• <a href="#">Multi-tiered system of supports platform</a> to monitor student growth across academics, behavior, attendance, and social-emotional learning</li> <li>• Identify student needs at each tier, plan evidence-based interventions, and progress monitor with an eye towards ensuring success for all students</li> </ul>
<p><b>Collaborative Climate &amp; Culture (CC)</b></p> <p>“The school system provides a safe and caring environment that supports teaching, learning, and student success.”</p> <p>“The school system intentionally engages parents/guardians to create effective partnerships that support the development and achievement of their students.”</p>	<ul style="list-style-type: none"> <li>• <a href="#">School climate survey</a> and reporting platform to gather feedback on safety and sense of belonging at school</li> <li>• <a href="#">Family-School Relationships Survey</a>—developed with Dr. Karen Mapp and aligned to the Dual-Capacity Building Framework—to increase family engagement in their students’ education</li> </ul>

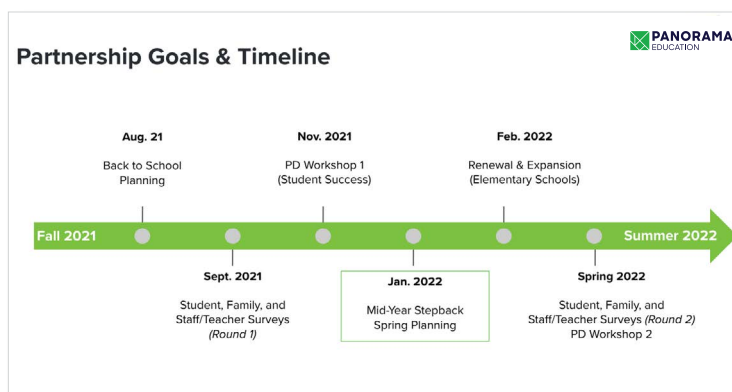


MSIP-6 Standard	Panorama Alignment
<p><b>Data-Based Decision Making (DB)</b></p> <p>“The school system gathers school climate and culture data from all stakeholder groups, analyzes and shares the results, and implements strategies for improvement.”</p> <p>”School system and building leaders establish a cycle of continuous improvement that includes reflection, data collection, analysis, planning, feedback, and evaluation.”</p>	<ul style="list-style-type: none"> <li>• A <a href="#">Playbook</a> with hundreds of strategies and interventions to take action on Panorama data</li> <li>• Workshops and trainings with <a href="#">Panorama’s Teaching and Learning team</a> to support district and school staff in driving improvement planning with data</li> <li>• A dedicated Panorama project management team to guide administrators in data-based decision making—including survey report calls, platform previews, and user engagement analytics to differentiate support for building leaders.</li> </ul>






## Panorama Usage Report

## Sample Panorama Partnership Timeline





MSIP-6 Standard	Panorama Alignment
<p><b>Alignment of Standards, Curriculum, &amp; Assessments (AS)</b></p> <p>“The school system regularly reviews performance data, for all students and disaggregated by student groups, to effectively monitor student academic achievement.”</p> <p>“Instructional staff use disaggregated data to adjust instruction for identified student groups and has criteria for evaluating the effectiveness of these adjustments.”</p>	<ul style="list-style-type: none"> <li>• <a href="#">Easy-to-use dashboards</a> to disaggregate and filter data by student groups, monitor students’ progress against academic standards (ex: MAP, i-Ready), and adjust Tier 1 instruction</li> </ul> <div>    </div> <ul style="list-style-type: none"> <li>• <a href="#">Intervention planning tools</a> for instructional staff to identify students in need of additional support and deliver interventions for Tier 2 and 3</li> </ul>

**“Being able to have tools like Panorama allow us to have the data to have conversations about what we need to do instructionally to ensure that wherever students are today, we’re helping build them towards what we want that graduate to look like.”**

–Liberty Public Schools (MO)

[LEARN MORE](#)

**“On our journey to improve school quality, we asked ourselves, ‘Are we meeting the requirements of our students and families?’ One of those requirements is a safe, caring, welcoming environment, and with Panorama we now have a better tool to measure that in a reliable and valid way.”**

–Park Hill School District (MO)

[LEARN MORE](#)

## MSIP-6 Standard

## Panorama Alignment

### Equity & Access (EA)

“The school system ensures each student, particularly low-income and minority students, has equitable access to qualified, experienced, and effective teachers, learning experiences, academic and social supports, and other resources necessary for success in all content areas.”

“The school system monitors equity gaps between student groups (e.g. gifted and/ or enrichment, at-risk, special education, etc.), applies strategies to reduce barriers between student groups and implements strategies to address equity gaps between student groups.”

- Demographic filters in the Panorama reporting platform to explore data by student group (ex: special education placement, gender) and identify gaps in student experiences
- [Dashboards](#) to identify and understand equity gaps across academics, social-emotional learning, behavior, and attendance

**Overview**

Interventions

Behavior

Check-in Responses

Custom Reports

**VIEW BY**

☐ School

☐ Grade Level

☐ Gender

☐ Cohort

☐ Race Ethnicity

☐ ELL Status

☐ FRPL Status

☐ Section 504 Status

☒ SP ED Placement

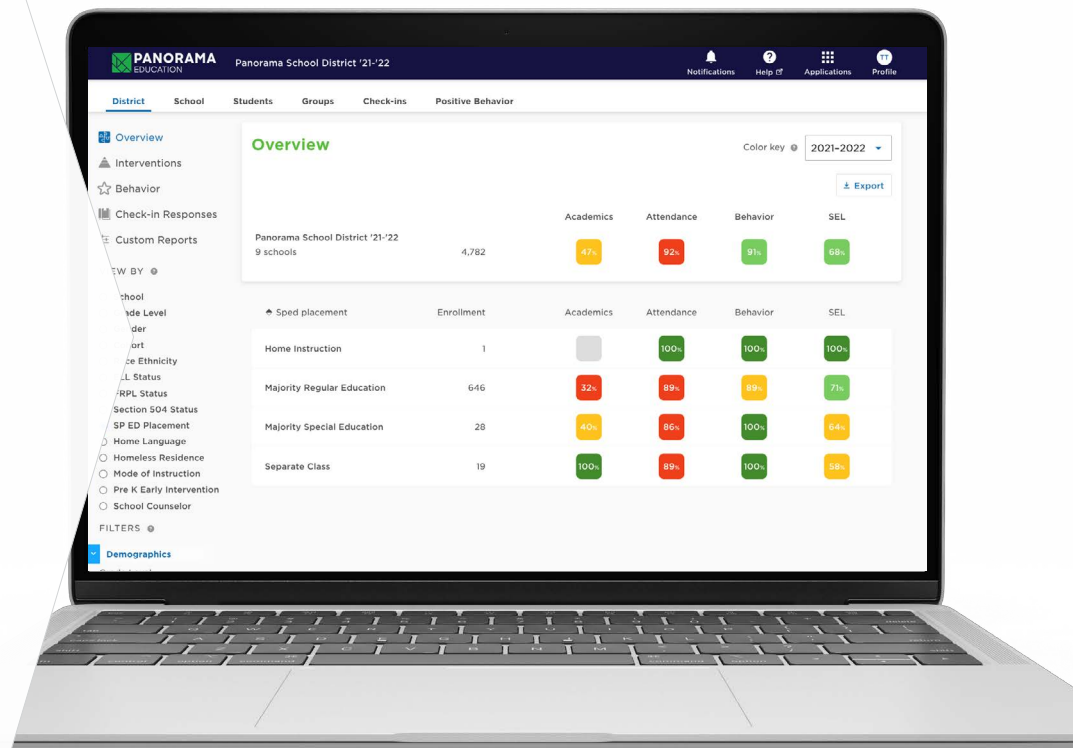
☐ Home Language

☐ Homeless Residence

☐ Mode of Instruction

☐ Pre K Early Intervention

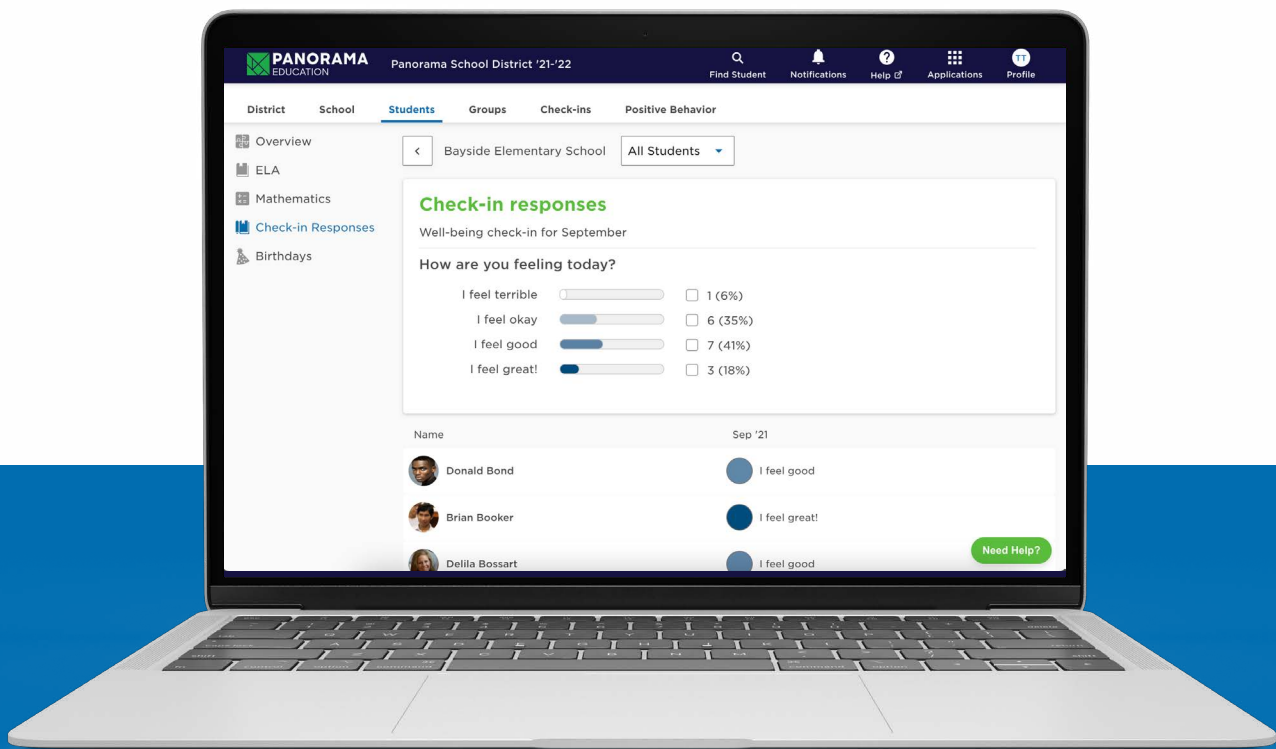
☐ School Counselor





# About Panorama Education

Panorama Education partners with K-12 schools and districts across the country to collect and analyze data about social-emotional learning, school climate, family engagement, and more. With research-backed surveys, actionable data reports, and intervention tracking tools, Panorama helps educators act on data and improve student outcomes. Panorama supports more than 12 million students in 21,000 schools across all 50 states, including those in the New York City Department of Education, Dallas Independent School District, Seattle Public Schools, and San Francisco Unified School District.



## Get in Touch:

Francesca Grandonico • Outreach Partner  
fgrandonico@panoramaed.com  
617-229-5875

[Schedule a Meeting With Me](#)

