

# AI Impact Audit

Evaluating AI classroom tools through an ethical lens

# Ethical Considerations for Using AI

As educators, we don't just introduce new technologies. We model how to use them wisely.

When it comes to artificial intelligence, that means thinking beyond what's possible and focusing on what's responsible.

Ethical considerations help us pause and ask:

**Is this tool helping us in the right ways? And at what cost?**



# Four Ethical Lenses

1

## **Access**

Can all students and teachers use this tool equally?

2

## **Accuracy**

Does the tool provide correct, up-to-date information?

3

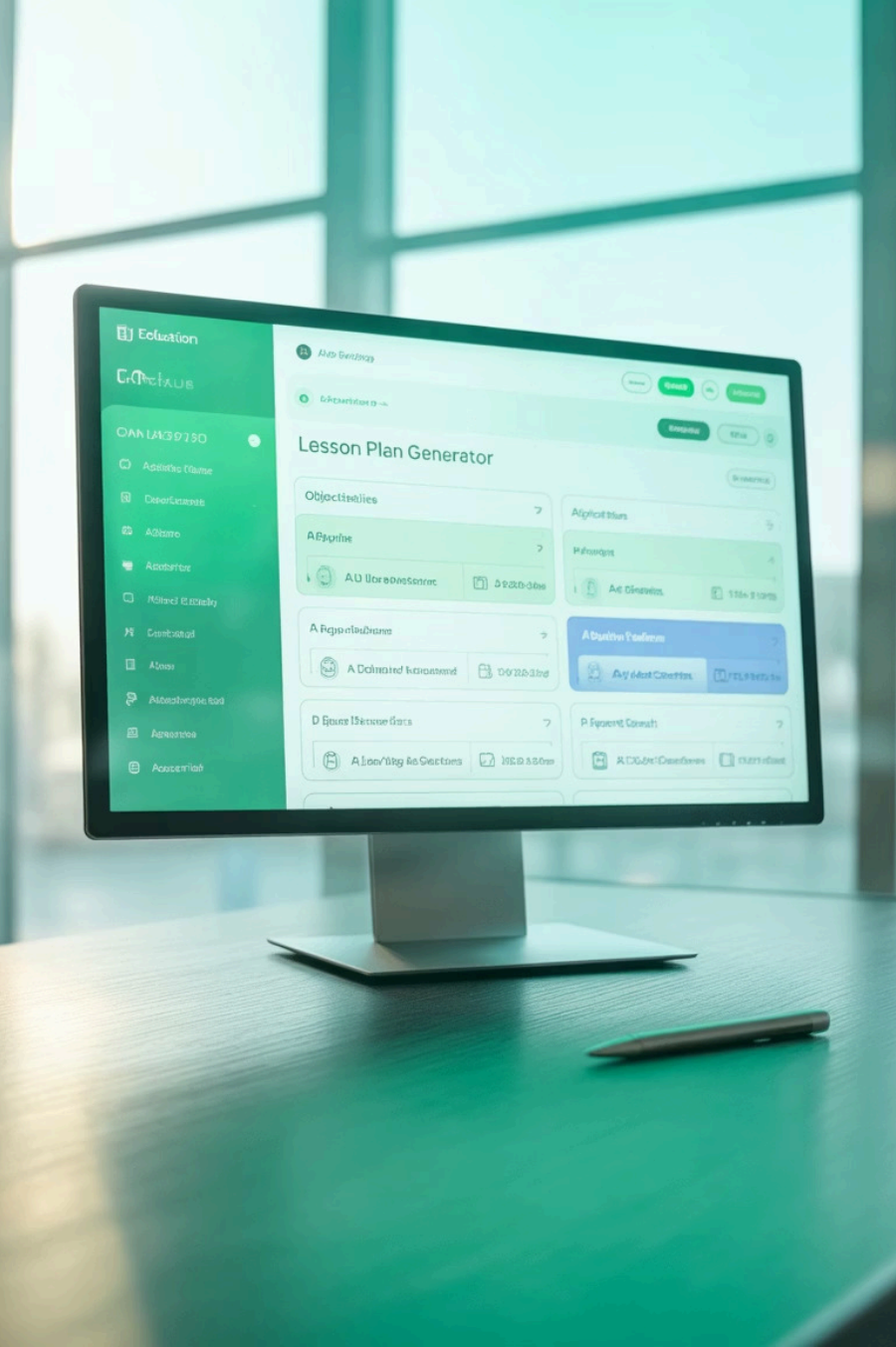
## **Fairness & Representation**

Does it work equally well for all groups and cultures?

4

## **Transparency**

Can we understand how it works and where its information comes from?







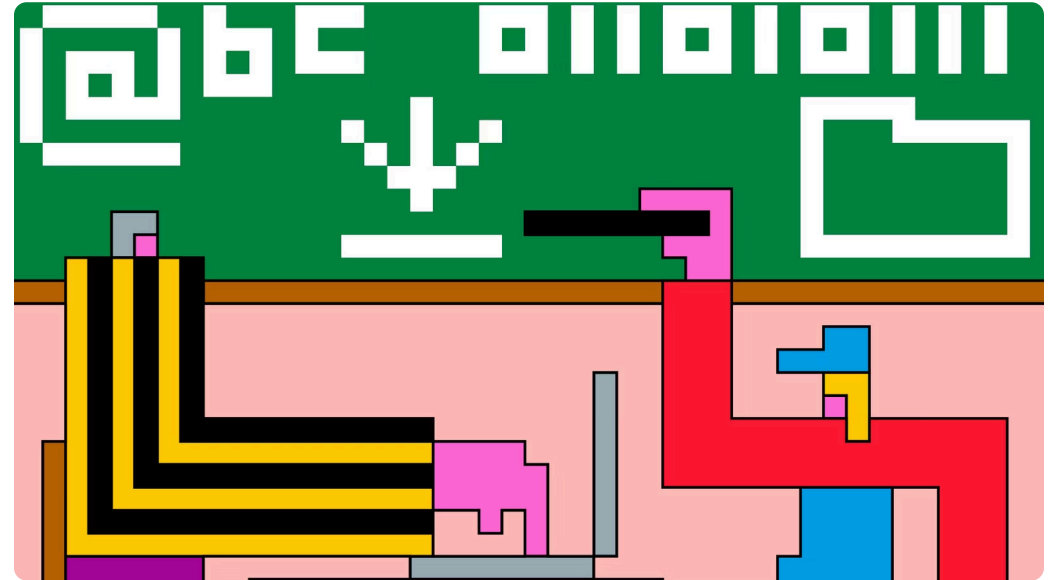
# Today's Case Study: EduHelperAI

- i A new AI tool that can instantly create lesson plans, quizzes, and feedback for students. It integrates with our learning platform but requires high-speed internet. It can generate culturally relevant examples, but it sometimes provides outdated facts and doesn't list its sources.

Your committee will evaluate whether to adopt this tool.

# Access Considerations

-  **Requires high-speed internet**
-  **Device compatibility?**
-  **Accessibility features?**
-  **User training/digital literacy?**



# Accuracy Considerations

“

Sometimes provides outdated facts

”

“

No citation of sources

”

“

Content quality consistency?

”

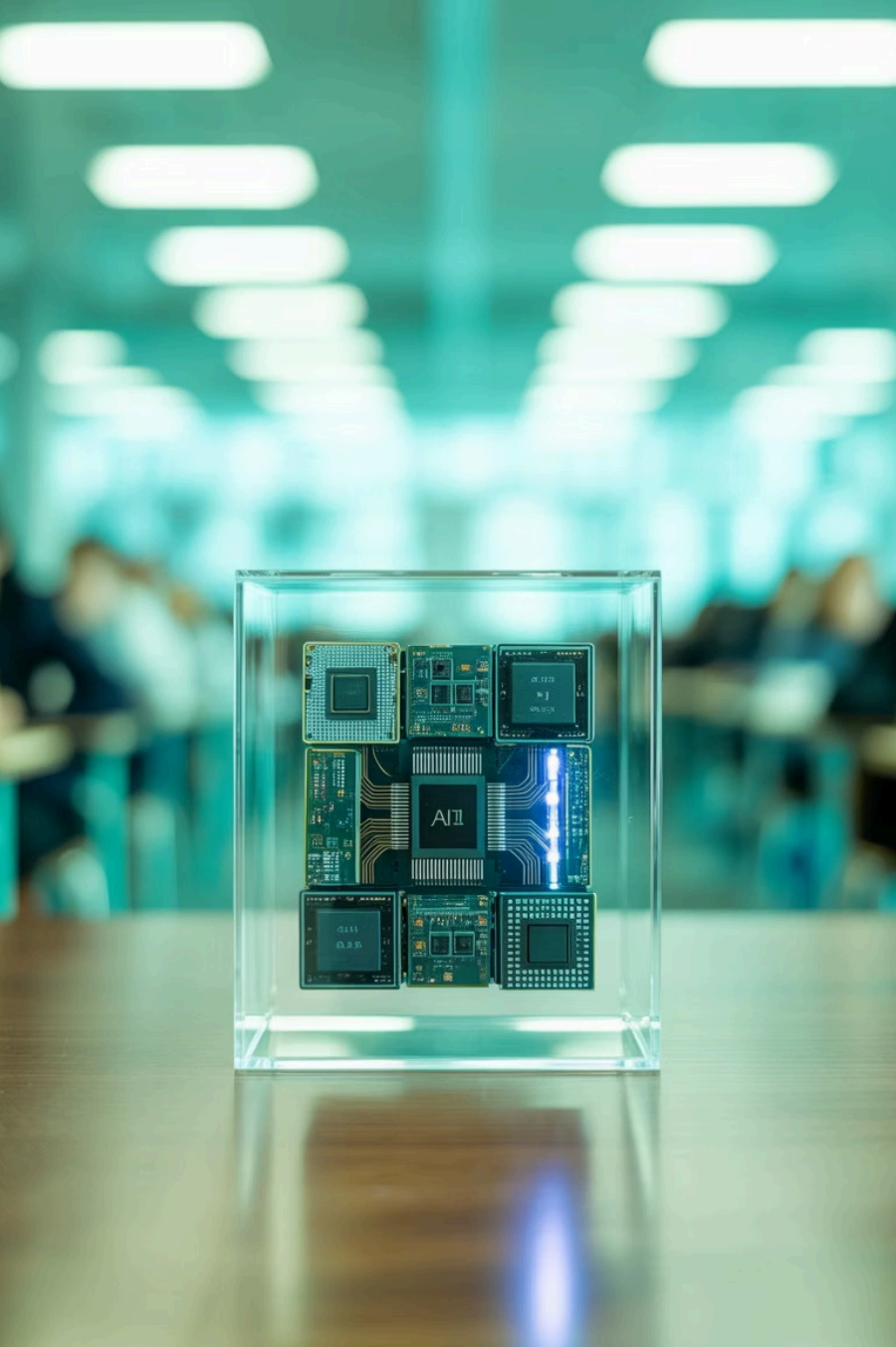


# Fairness & Representation

"Can generate culturally relevant examples"

- For which cultures and contexts?
- Does content reflect diverse perspectives?
- Does it meet the needs of all student groups?





# Transparency Considerations

## Source Attribution

Where is the information coming from?

## Data Privacy

How is student data being used?

## Algorithm Logic

Can we understand how it makes decisions?

# Group Discussion

For each ethical lens:

"One risk is..."

"One way to address this is..."





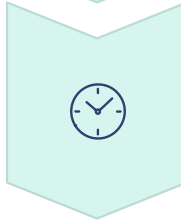
# Decision Point



**Adopt as is**



**Adopt with conditions**



**Do not adopt**

How can we make ethical review part of our regular process?