



Middle School Students' Academic and Social-Emotional Needs

New Research and Practices

Join the Discussion



#MiddleSchoolSEL



Nicole Mickle

Success Partner

—
www.panoramaed.com

Join the Discussion



#MiddleSchoolSEL

A woman with short blonde hair and glasses is clapping and cheering enthusiastically. She is looking towards a young man in a dark blue and yellow archery uniform. The uniform has "JEFFERSON" at the top, a tiger head logo in the center, and "ARCHERY" at the bottom. The background is a blurred indoor sports facility.

What do middle school students need?

Today's "Look Fors"

- School climate surveys and focus groups to understand students' middle school experience and identify gaps
- Social-emotional learning (SEL) measurement to boost academic outcomes for middle school students
- SEL data within tiered student support frameworks to identify students who start to struggle and who are ready for advanced coursework
- Data inquiry and design thinking processes to innovate to support student growth





In our middle schools, we will...

- Provide an equitable foundation across every school.
- Provide every middle school student with the supports he or she needs to succeed.



Angela Ward

Assistant Superintendent of
Equity and Academics



In our middle schools, we will...

- Improve academic outcomes by addressing the social and emotional needs of all of our students.



Dr. Ilia Molina

**Executive Director,
Middle School Redesign**

What do middle school students need

To be ready for college, career, and life?



COURSEWORK



**SOCIAL-EMOTIONAL
LEARNING**



ATTENDANCE



BEHAVIOR

Supporting middle school students' academic, social, and emotional needs

Research Minute

Is Stronger SEL
Linked to
Better Grades,
Attendance &
Behavior?



3:39





How does SEL correlate with the ABCs?



A background image of a classroom with students sitting at desks, looking down at their work. The room has large windows and framed pictures on the wall.

Supporting Students' Academic Growth

By Understanding Their Social,
Emotional, and Behavioral Needs



Middle School Redesign - Where we started

Academic scores stagnated. School climate surveys showed students and parents weren't happy with the traditional structure.

Digging deeper, three themes emerged:

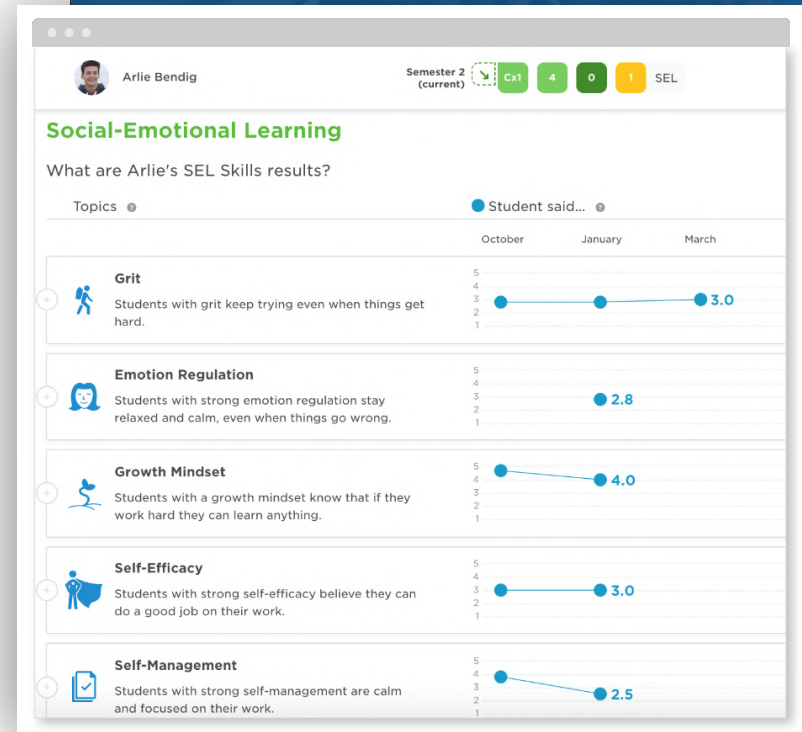
1. Students asked us for **more social-emotional support**
2. Students told us they were bored
3. Students and teachers asked us to look at the master schedule to offer different experiences and **opportunities to connect**





What we need to understand

- **Sense of Belonging** – Do our students feel valued at their school?
- **Safety** – How do our students feel across key facets of safety, such as in-person and online bullying behavior and physical safety
- **Growth Mindset** – Do our students believe they can increase their intelligence and talent through effort?
- **Grit** – Do our students believe they can persevere through set-backs to pursue and important goal?



The Foundation Across Our Middle Schools

- Standards-based grading
- Focus on skills, rather than behaviors
- Strong counseling standards
- Social-emotional learning curriculum for all students using Second Step
- Feedback from students around belonging and relationships using Panorama
- Master schedule includes “Flex Time” and “Rebound Days”

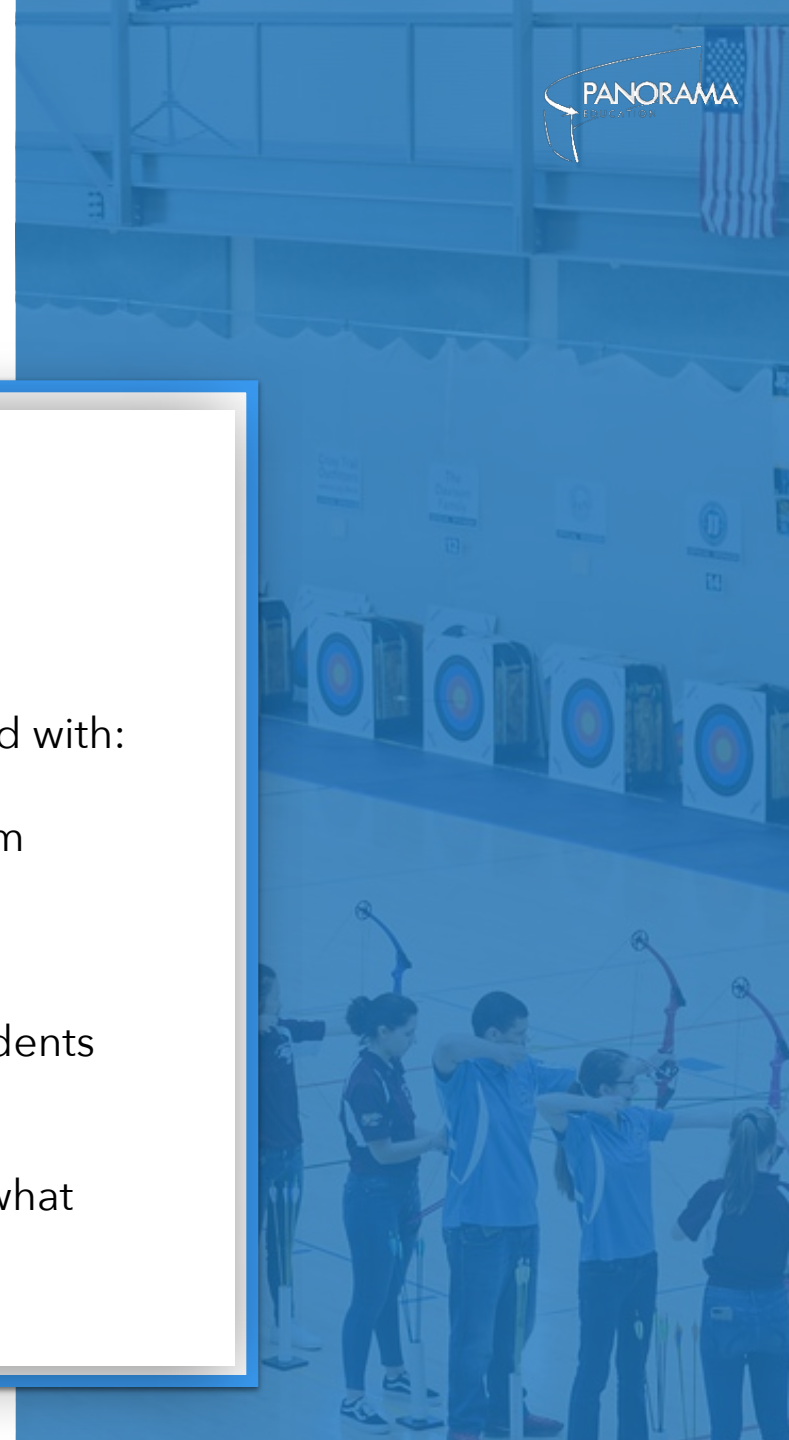


Addressing Students' Needs

BEFORE

Our counseling team identified that they struggled with:

- Reacting to issues, rather than preventing them
- Making sense of data in separate systems
- Spending time in spreadsheets to identify students for Tier 2 supports and monitor progress
- Using an SEL program without truly knowing what our students are getting out of it



Proactively Addressing Students' Needs

WITH PANORAMA

- Get to students faster
- Identifying more students for advanced courses and AVID
- Running efficient MTSS and RTI processes
- "You have SEL strengths, let's find them"



Panorama School District
Data synced about 2 hours ago

Find a student

My Students
Viewing all 1,345 students

	Academics	Attendance	Behavior	SEL
	38%	70%	86%	
	29%	21%	9%	
	16%	7%	4%	
	15%	3%	1%	

Student Name	Academics	Attendance	Behavior	SEL
Triston Abbott	Cx3	98%	100%	3
Millie Abbott	Cx5	96%	100%	2
Tatum Abbott	Dx1	96%	100%	6
Annalise Abbott	Dx1	100%	99%	4
Keenan Acevedo	Fx1	100%	100%	4
Gary Acosta	Cx2	98%	99%	

A blurred background image of a school hallway with a yellow wall and a student in the foreground wearing a blue backpack.

Schoolwide Practices

To Understand and Provide What
Middle School Students Need



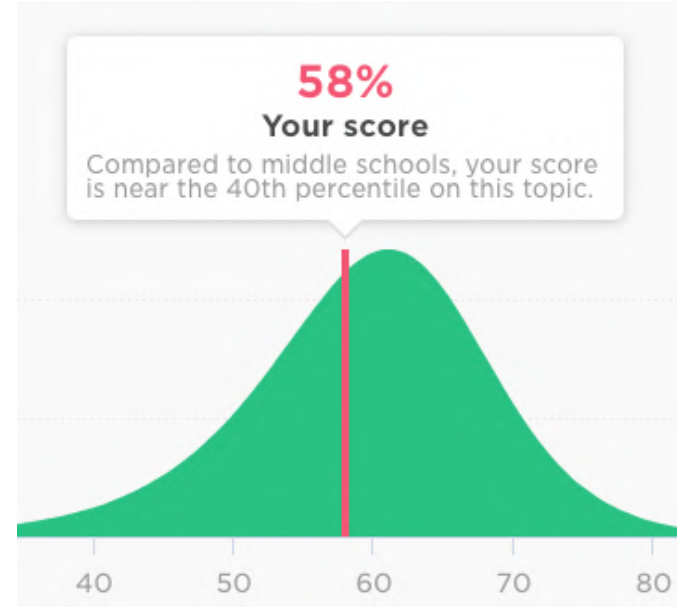
Our students depend on us to know who they are.





School Climate Data for School Improvement

- What do we think our buildings feel like? What do our students say?
- Do our black students feel that they belong in their school at parity with their peers?
- Do students across all student groups have strong relationships with adults in our building?



Teacher-Student Relationships results from one middle school in Champaign Unit 4 Schools



Using Design Thinking to Empathize With and Provide What Our Students Need





Emphathize

Shadowed Students
Interviewed Students
Gathered Data through
Surveys



Define

MSR Committee
convened
multiple times to
analyze results
and create a
problem
statement .



Ideate

The MSR Committee
brainstormed how to
improve the middle
school experience



Prototype

Multiple middle
schools have already
implemented smaller
components of MSR
through the HACKS
presentation



Test

9 Pilot Schools
will receive full
implementation
in 2018-2019.
All middle
schools will
implement
certain portions
of MSR



Design Thinking





Developing Strategies to Address Students' Needs

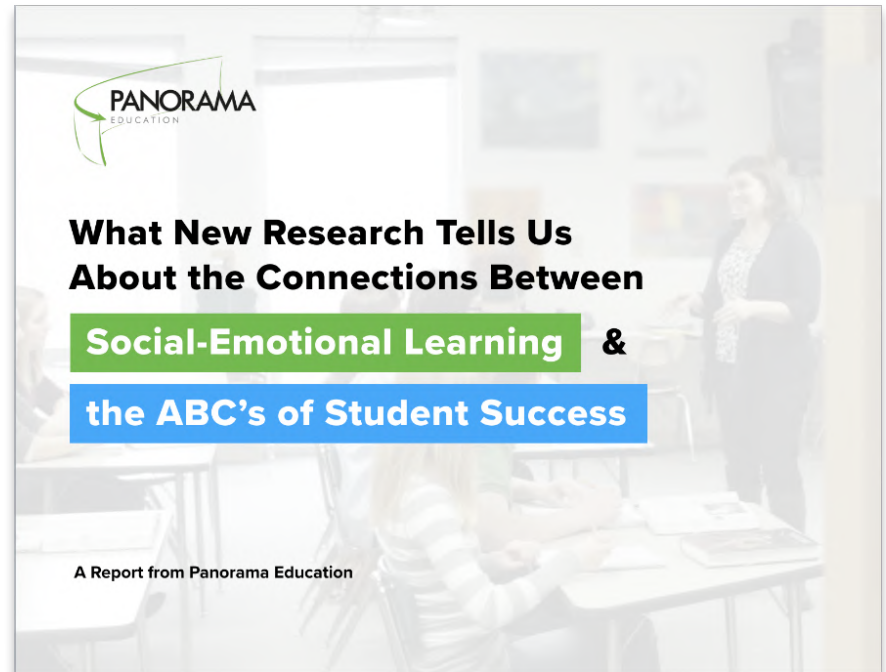
- **To improve safety,** one large campus developed a new, color-coded pass system and introduced it with a PSA video created by students
- **To improve belonging,** one campus introduced "Club Hour" for students

What's been the impact?

- + Increased attendance on Club Hour days
- + Increased student engagement



Panorama's Research Brief: SEL + ABCs



Download the resource:
bit.ly/sel-abc

Questions & Answers

Join the Discussion



#MiddleSchoolSEL



Thank You

Join the Discussion



#MiddleSchoolSEL